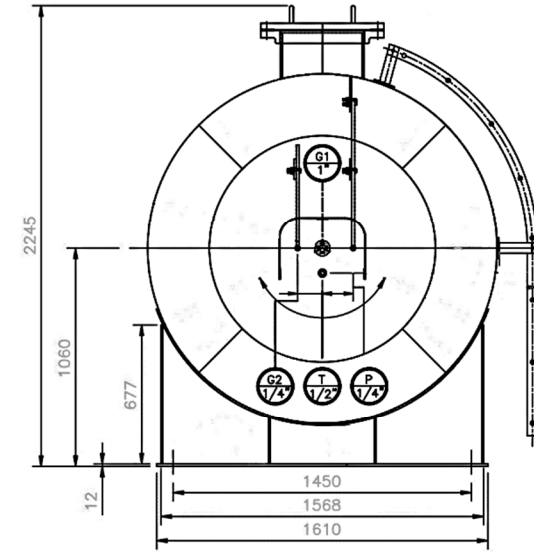


SIDE VIEW



SECTION "A-A"

NOZZLE SCHEDULE								
LIST	SERVICE	SIZE	Q'TY.	NACK NOZZLE		FLANGE/COUPLING		REMAKE
				SCH.	MAT'L	RATING	MAT'L	
A	LIQUID INLET	2"	1	80	A106 Gr.B	6000# COUPLING	A105	-
B	LIQUID OUTLET	2"	1	-	-	6000# COUPLING	A105	-
C	VAPOUR OUTLET	1-1/4"	1	80	A106 Gr.B	6000# COUPLING	A105	-
D	DRAIN	1-1/4"	1	-	-	6000# COUPLING	A105	WITH PLUG
E	SPARE INLET	2"	1	-	-	6000# COUPLING	A105	WITH PLUG
G1	LEVEL GAUGE	1"	1	-	-	-	A105	
G2	FIXED TUBE	1/4"	1	80	A106 Gr.B	6000# COUPLING	A105	
M	MANHOLE	16"	1	10t	G3115 SPV355	ANSI 300# SO,RF	A105	WITH BLIND FLANGE
P	PRESSURE INDICATOR	1/4"	1	80	A106 Gr.B	6000# COUPLING	A105	
T	THERMOMETER	1/2"	1	80	A106 Gr.B	6000# COUPLING	A105	
R	SAFETY RELIEF	1-1/4"	1	-	-	6000# COUPLING	A105	
V1	VAPOUR RETURN	3/4"	1	80	A106 Gr.B	6000# COUPLING	A105	
V2	SPARE	1"	1	-	-	6000# COUPLING	A105	WITH PLUG

DESIGN SPECIFICATION			
DESIGN CODE	: ASME SEC VIII DIV 1, 2010 EDITION		
DESIGN PRESSURE	: 1.650 (MPa)g @ 50 °C		
HYDROSTATIC TEST PRESSURE	: 2.475 (MPa)g @ AMBIENT TEMP °C		
OPERATING PRESSURE	: (MPa)g @ °C		
MAX. ALLOWABLE WORKING PRESSURE (MAWP)	: 1.650 (MPa)g @ 50 °C		
MIN. DESIGN METAL TEMPERATURE (MDMT)	: 0 °C @ 1.65 MPaG		
PADIOGRAPH	SHELL : FULL HEAD : SPOT	CORROSION ALLOWANCE	SHELL : 0.5 mm. HEAD : 0.5 mm.
JOINT EFFICIENCY		POSTWELD HEAT TREATMENT	: NO
SHELL	: 1.0	WEIGHT FABRICATION	: 2,328 KGS.
HEAD	: 0.85	OPERATION	: 6,512 KGS.
		FULL WATER	: 11,277 KGS.
HEAD TYPE	: HEMI SPHERICAL	INSULATION	: NO
MATERIAL SPECIFICATION			
HEAD/SHELL	: JIS G3115 SPV 355 OR EQUIVALENT	FLANGE	: A516 Gr.70N/A105
NOZZLE NECK	: API5L Gr.B	COUPLING	: A105
INTERNAL PIPE	: A53 Gr.A/A106 Gr.B	OTHERS	: SEE DRAWING
GASKET	: SPIRAL WOUND 4.5t WINDING 304 SS, GRAPHITE FILLED, CS. OUTER RING.		
SURFACE PREPARATION (EXTERNAL SURFACE) SA 2.5			
PAINING	PRIMER COAT	ZINC RICH PRIMER	1 x 60 MICRONS
	INTERMEDIATE COAT	EPOXY UNDERCOAT	1 x 60 MICRONS
	TOP COAT	POLYURETHANE	2 x 35 MICRONS