



Sonix Metric Gas Meters

Sonix 12 • Sonix 16 • Sonix 25

With its compact size and simple, no-moving parts design, Sonix offers unprecedented levels of accuracy, reliability, and performance available in no other gas meter – all backed by the industry's best warranty.

Sonix is nothing short of a transformation in gas metering. Unlike diaphragm meters, Sonix completely eliminates moving parts and measures gas flow through proven ultrasonic technology. This fully-electronic platform houses extensive diagnostic capabilities and highly accurate temperature correction right in the meter without requiring additional, bulky equipment. What's more, its compact size drastically reduces installation and labor costs and space requirement.

The Sonix gas meters are members of the Sensus range of ultrasonic gas meters, for use on Natural Gas, having flow capacities of 12 m³/h, 16 m³/h and 25 m³/h respectively. Imperial display units are also available.

FEATURES

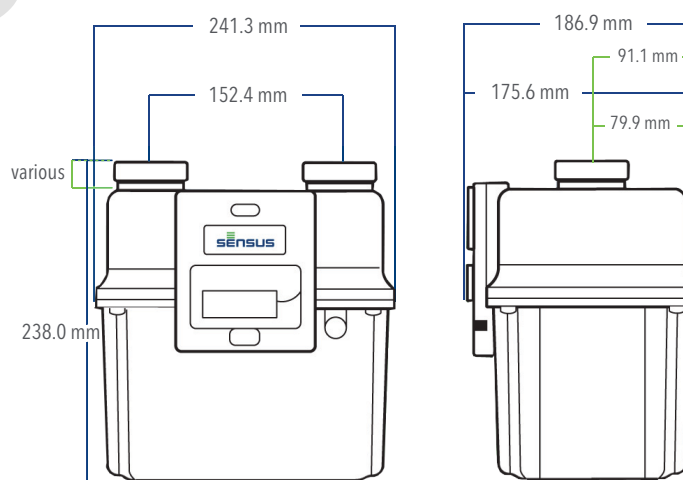
- Compact size
- No moving parts
- Hourly data logging for 60 days
- Programmable fixed factor pressure compensation
- Internal thermistor temperature compensation
- 10 year battery life
- Pulse output

PHYSICAL & POWER

Display	3/8" LCD index; 4, 5, or 6 digits with 3 digit alarm/high resolution index. Can be set to temperature and/or fixed factor pressure converted index.
Case	383 aluminum alloy
Dimensions	238.0 mm x 241.3 mm x 186.9 mm
Weight	5.0 kg.
Power Supply	Replaceable lithium thionyl chloride battery 3.6V "D" cell battery back

BENEFITS

- Improved accuracy
- Elimination of accuracy drift with time and temperature
- Reduced costs over life of product



For pulse output version the recommended clearance required at the back of the meter for the output cable is 105 mm from the center line of the gas connections.

Sonix Metric Gas Meters

Sonix 12 • Sonix 16 • Sonix 25

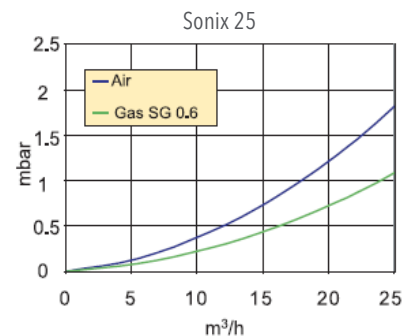
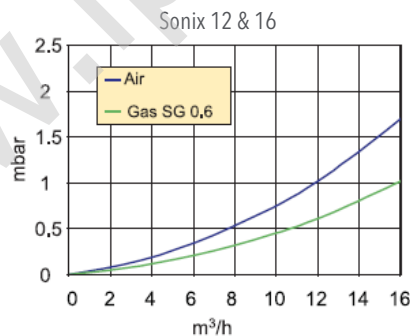
SPECIFICATIONS

	Sonix 12	Sonix 16	Sonix 25
Rated Capacity Q max at 1.25 mbar differential	12.0 m ³ /h	16.0 m ³ /h	25.0 m ³ /h
Rated Capacity Q max at 5.0 mbar differential	22.7 m ³ /h	32.0 m ³ /h	46.0 m ³ /h
Rated Capacity Q min	0.16 m ³ /h	0.16 m ³ /h	0.22 m ³ /h
Typical Accuracy	0.16 m ³ /h to 0.70 m ³ /h ±2%	0.16 m ³ /h to 0.70 m ³ /h ±2%	0.22 m ³ /h to 1.13 m ³ /h ±2%
	0.70 m ³ /h to 22.7 m ³ /h ±1%	0.70 m ³ /h to 32.0 m ³ /h ±1%	1.13 m ³ /h to 46.0 m ³ /h ±1%
Low Flow Cutoff	28.3 liters/hr		
Temperature Range	Operation -35° to +65°C; Correction -35° to +55°C		
Pressure Rating	Maximum operating pressure 1.4 bar		
Speed of Sound Range	300m/s to 500m/s		

STANDARDS

Construction & Performance	OIML R6:1989 General Provisions for Gas Volume Meters ANSI B109.2 Diaphragm Type Gas Displacement Meters Measurement Canada PS-G-06 approval AG-0514
Electrical Safety	UL1604, Third Edition: Electrical Equipment for Use in Class I and Class II, Division 2, and Class III Hazardous Classified Locations, Rev. 1995 CSA C22.2 No. 213, First Edition: Non-Incentive Electrical Equipment for Use in Class I, Division 2 Hazardous Locations, Rev. 1999
Ingress Protection	NEMA 3R enclosure rating (IP22)
Immunity (Magnetic & Radiated)	IEC 61000-4-8:1993 for Magnetic Immunity IEC 61000-4-3:1995 for Radiated Immunity.
Vibration & Shock	IEC 60068/2-6 and IEC 60068-2-31
EMC Emissions	Title 47 of the CFR, Part 18 Subpart C - 18.309(a) and 18.311 Radiated Emission Limits for Industrial, Scientific, and Medical (ISM) Equipment, Ultrasonic Devices.
Communications	BS EN 61107 1996, Data Exchange for Meter Reading, Tariff and Load Control - Direct Local Data Exchange

Typical Pressure Loss



Xylem.com | Sensus.com

Sensus | 637 Davis Drive Morrisville, NC 27560 | 1-800-638-3748

©2020 Sensus. All products purchased and services performed are subject to Sensus' terms of sale, available at either sensus.com/TC or 1-800-638-3748. Sensus reserves the right to modify these terms and conditions in its own discretion without notice to the customer. The Sensus logo is a registered trademark of Sensus.

This document is for informational purposes only, and SENSUS MAKES NO EXPRESS WARRANTIES IN THIS DOCUMENT. FURTHERMORE, THERE ARE NO IMPLIED WARRANTIES, INCLUDING WITHOUT LIMITATION, WARRANTIES AS TO FITNESS FOR A PARTICULAR PURPOSE AND MERCHANTABILITY. ANY USE OF THE PRODUCTS THAT IS NOT SPECIFICALLY PERMITTED HEREIN IS PROHIBITED.